



SRp20 Polyclonal Antibody

| | |
|---------------------------|---|
| Catalog No | YP-Ab-02043 |
| Isotype | IgG |
| Reactivity | Human;Mouse |
| Applications | WB;IHC;IF;ELISA |
| Gene Name | SRSF3 |
| Protein Name | Serine/arginine-rich splicing factor 3 |
| Immunogen | The antiserum was produced against synthesized peptide derived from human SFRS3. AA range:111-160 |
| Specificity | SRp20 Polyclonal Antibody detects endogenous levels of SRp20 protein. |
| Formulation | Liquid in PBS containing 50% glycerol, 0.5% BSA and 0.02% sodium azide. |
| Source | Polyclonal, Rabbit,IgG |
| Purification | The antibody was affinity-purified from rabbit antiserum by affinity-chromatography using epitope-specific immunogen. |
| Dilution | Western Blot: 1/500 - 1/2000. Immunohistochemistry: 1/100 - 1/300. Immunofluorescence: 1/200 - 1/1000. ELISA: 1/5000. Not yet tested in other applications. |
| Concentration | 1 mg/ml |
| Purity | ≥90% |
| Storage Stability | -20°C/1 year |
| Synonyms | SRSF3; SFRS3; SRP20; Serine/arginine-rich splicing factor 3; Pre-mRNA-splicing factor SRP20; Splicing factor; arginine/serine-rich 3 |
| Observed Band | 25kD |
| Cell Pathway | Nucleus . Nucleus speckle . Cytoplasm . Recruited to nuclear speckles following interaction with YTHDC1. . |
| Tissue Specificity | Brain,Epithelium,Placenta,Tongue, |
| Function | function:May be involved in RNA processing in relation with cellular proliferation and/or maturation.,PTM:Extensively phosphorylated on serine residues in the RS domain.,similarity:Belongs to the splicing factor SR family.,similarity:Contains 1 RRM (RNA recognition motif) domain.,subunit:Interacts with CPSF6, RBMY1A1 and SFRS12., |
| Background | The protein encoded by this gene is a member of the serine/arginine (SR)-rich family of pre-mRNA splicing factors, which constitute part of the spliceosome. Each of these factors contains an RNA recognition motif (RRM) for binding RNA and an RS domain for binding other proteins. The RS domain is rich in serine and arginine residues and facilitates interaction between different SR splicing factors. In addition to being critical for mRNA splicing, the SR proteins have also been shown to be involved in mRNA export from the nucleus and in translation. Two |



transcript variants, one protein-coding and the other non-coding, have been found for this gene. [provided by RefSeq, Sep 2010],

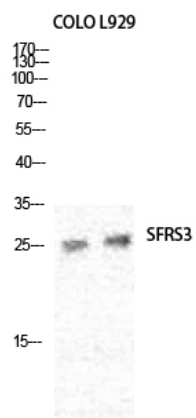
matters needing attention

Avoid repeated freezing and thawing!

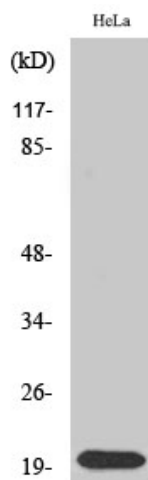
Usage suggestions

This product can be used in immunological reaction related experiments. For more information, please consult technical personnel.

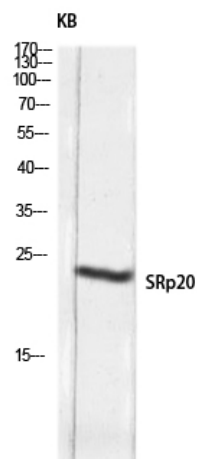
Products Images



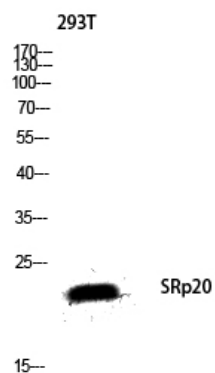
Western Blot analysis of various cells using SRp20 Polyclonal Antibody diluted at 1:2000 cells nucleus extracted by Minute TM Cytoplasmic and Nuclear Fractionation kit (SC-003, Inventbiotech, MN, USA).



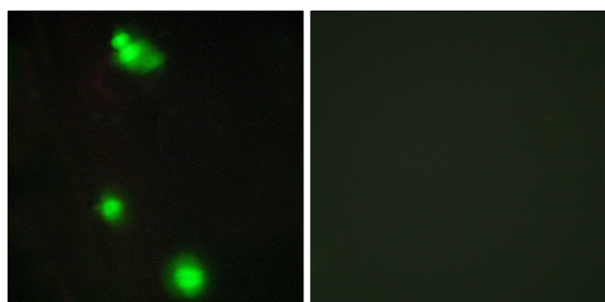
Western Blot analysis of Jurkat cells using SRp20 Polyclonal Antibody diluted at 1:2000 cells nucleus extracted by Minute TM Cytoplasmic and Nuclear Fractionation kit (SC-003, Inventbiotech, MN, USA).



Western blot analysis of KB lysis using SRp20 antibody. Antibody was diluted at 1:2000 cells nucleus extracted by Minute TM Cytoplasmic and Nuclear Fractionation kit (SC-003, Inventbiotech, MN, USA).



Western blot analysis of 293T lysis using SRp20 antibody. Antibody was diluted at 1:2000 cells nucleus extracted by Minute TM Cytoplasmic and Nuclear Fractionation kit (SC-003, Invent biotech, MN, USA).



Immunofluorescence analysis of MCF7 cells, using SFRS3 Antibody. The picture on the right is blocked with the synthesized peptide.